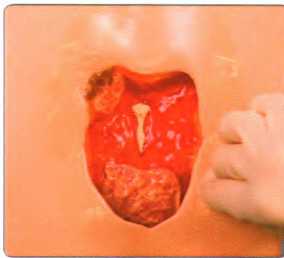
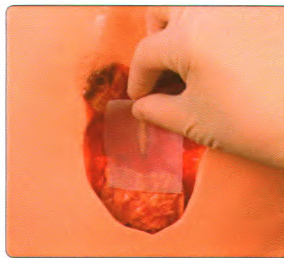


Dressing Application Guide

Invia® Foam Dressing Kit with FitPad



1. Thoroughly **clean and debride the wound**. Apply skin prep to protect the peri-wound skin.



2. If required, **apply a non-adherent contact layer** prior to placing the foam into the wound.



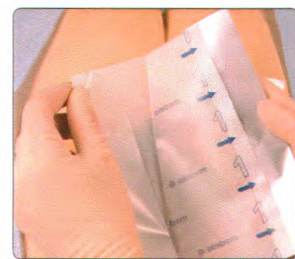
3. **Cut the foam** to fit the size and shape of the wound. Do not cut directly over the wound.



4. Rub the edges of the foam to **remove any loose particles**.



5. **Place the foam** into the wound cavity. Do not tightly pack or force foam into areas of the wound. Do not allow the foam to overlap onto intact skin.



6. **Apply transparent film**. Partially peel back one side of layer 1 and place the adhesive side down. Remove the remaining side of layer 1.



7. Now remove the transparent backing layer labeled 2.



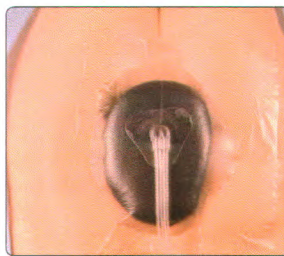
8. Remove the perforated silver colored tab on the side. The film should extend 3–5 cm beyond the wound margin to facilitate adequate seal.



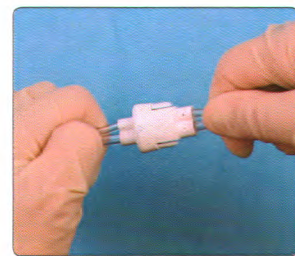
9. Select appropriate location for the suction pad (FitPad) to be applied. **Pinch the film and cut a small hole** (approx. 1 cm).




10. Peel the backing off the FitPad to expose the adhesive.





11. **Place the FitPad** centered over the previously cut hole in the dressing. Press firmly for adherence.



12. Attach the dressing tubing to the pump tubing by pushing the Quick-connector together until you hear a click.

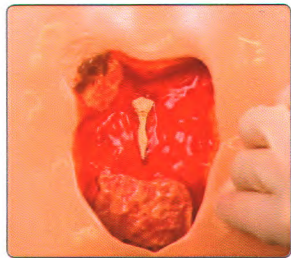
 The Invia Foam Dressing Kit with FitPad is intended to be used in conjunction with the Invia Motion and Invia Liberty Negative Pressure Wound Therapy Systems (NPWT).

 Invia NPWT instructions advise 24 hour therapy without interruption. If therapy is discontinued for more than 2 hours, the dressing should be replaced and therapy restarted by a healthcare professional.

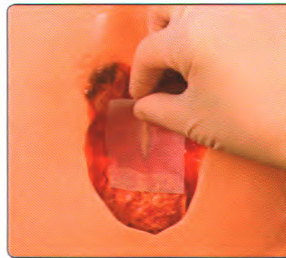
 This Quick Card does not replace the instructions for use REF 200.8923.

Dressing Application Guide

Invia® Gauze Dressing Kit with FitPad



1. Thoroughly clean and debride the wound. Apply skin prep to protect the peri-wound skin.



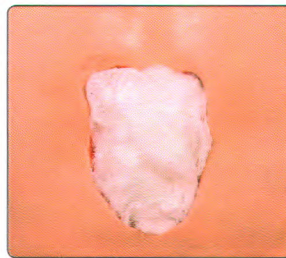
2. If required, apply a non-adherent contact layer prior to placing the gauze into the wound.



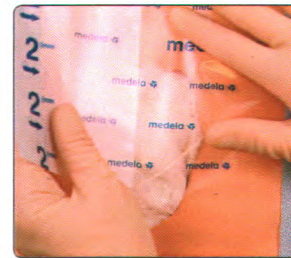
3. Cut the gauze to fit the size and shape of the wound. Do not cut the gauze directly over the wound.



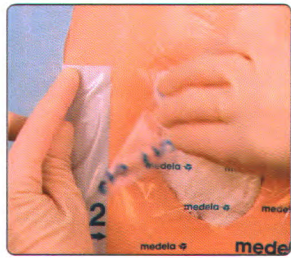
4. Saturate the gauze with the saline provided.



5. The gauze should fit loosely into the wound bed. Do not tightly pack or force gauze into areas of the wound.



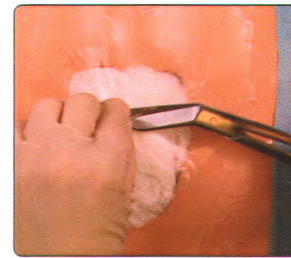
6. Apply transparent film. Partially peel back one side of layer 1 – place the adhesive side down. Remove the remaining side of layer 1.



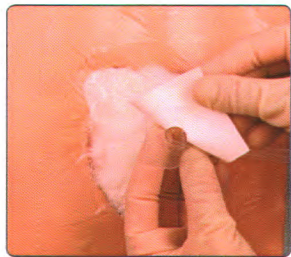
7. Now remove the transparent backing layer labeled 2.



8. Remove the perforated silver colored tab on the side. The film should extend 3–5 cm beyond the wound margin to facilitate an adequate seal.



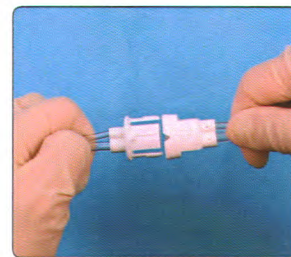
9. Select appropriate location for the suction pad (FitPad) to be applied. Pinch the film and cut a small hole (approx. 1 cm).




10. Peel the backing off the FitPad to expose the adhesive.





11. Place the FitPad centered over the previously cut hole in the dressing. Press firmly for adherence.



12. Attach the dressing tubing to the pump tubing by pushing the Quick-connector together until you hear a click.

 The Invia Gauze Dressing Kit with FitPad is intended to be used in conjunction with the Invia Motion and Invia Liberty Negative Pressure Wound Therapy Systems (NPWT).

 Invia NPWT instructions advise 24 hour therapy without interruption. If therapy is discontinued for more than 2 hours, the dressing should be replaced and therapy restarted by a healthcare professional.

 This Quick Card does not replace the instructions for use REF 200.9065.

Please contact us or your local Medela representative for details.

 Medela AG
Lättichstrasse 4b
6341 Baar, Switzerland
www.medela.com

USA
Medela LLC
1101 Corporate Drive
McHenry
IL 60050, USA
Phone +1 877 735 1626
Fax +1 815 307 8942
info-healthcare@medela.com
www.medela-healthcare.us

Canada
Medela Canada Inc.
4160 Sladeview Cres., Unit #8
Mississauga, ON
L5L 0A1, Canada
Phone +1 800 435 8316
Fax +1 800 995 7867
info@medela.ca
www.medela.ca



SPECIALTY MEDICAL PRODUCTS, INC.
Billing: 50 Pennsylvania Ave Malvern, PA 19382
Shipping: 187 Pennsylvania Ave Malvern, PA 19382
Phone: (888) 698-1522 **Fax (610) 644-3992**
Email: info@smpcares.com
Website: www.smpcares.com

CAUTION: U.S. Federal law restricts this device to sale by or on the order of a physician.